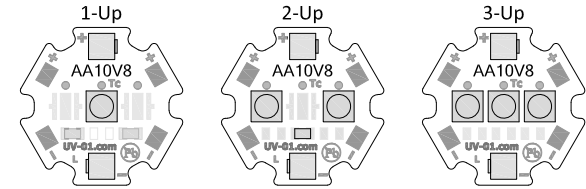
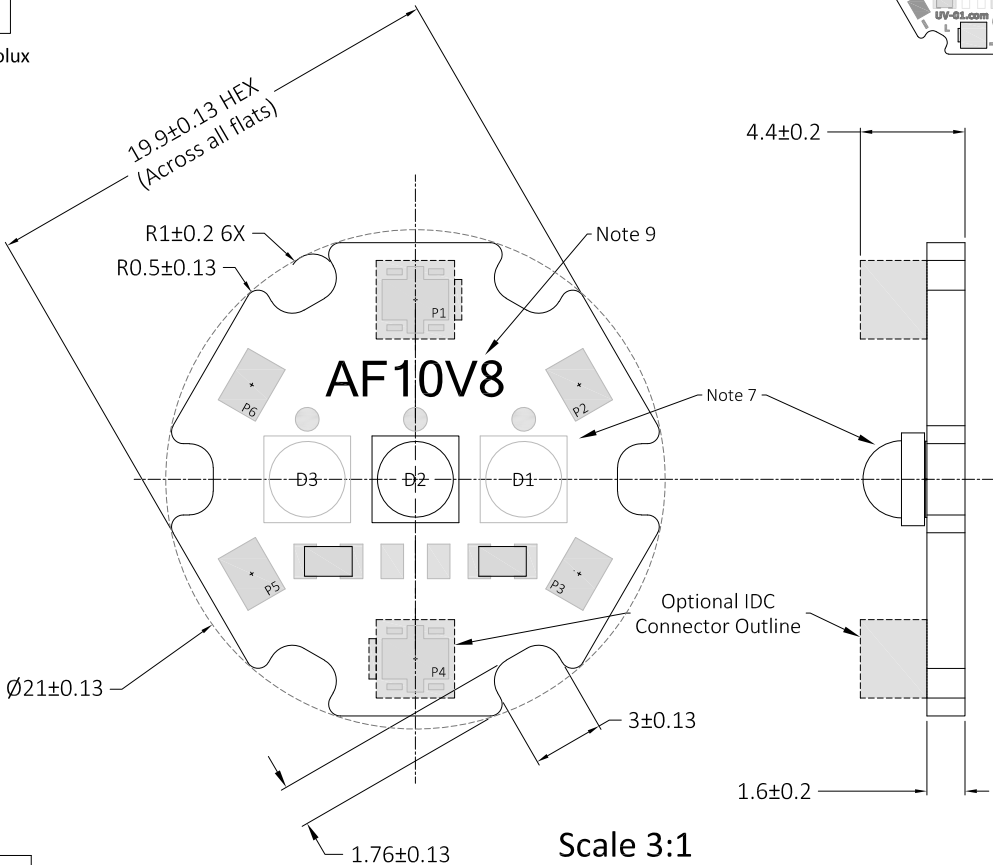
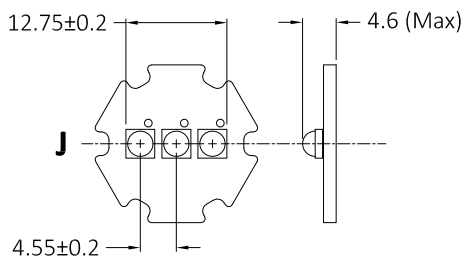
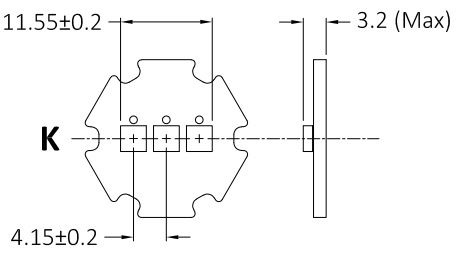
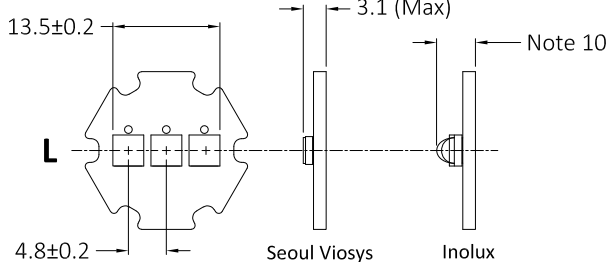


REVISIONS			
REV	DESCRIPTION	BY	DATE



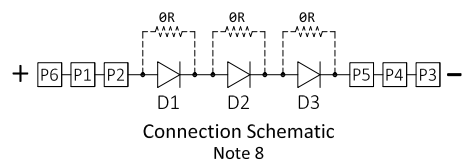
PCB Pads & Markings
1:1

- NOTES:**
- Base is a Polytronics TCB-8 aluminum MCPCB with white soldermask and black markings.
 - Bottom of the MCPCB base is uncoated and electrically neutral.
 - Solder pads are ENIG plated.
 - LED module must be mounted to a suitable heat sink with a thermally conductive interface material such as our pre-cut thermal adhesive tape. (Part LXT-S-12)
 - The thermal test pads may be electrically connected to the LED anode or cathode. See the datasheet for instructions for determining LED junction temperature.
 - Solder pad locations are relative from the center of the module to the center of the solder pad.
 - The UV-01 module can be ordered with 1, 2 or 3 mounted LEDs. Multiple LEDs will be connected in series. See J, K & L Layouts For LED Positioning & Dimensions.
 - OR jumper resistors added for empty LED locations.
 - Unique ID assigned to every UV-C LED module formatted as follows:
 - First two characters = LED module assembly/test date code
 - Number between the first and last two characters = Unique module ID
 - Last two characters = Mounted LED production code
 - The maximum overall height will depend on the mounted Inolux LED:
 - IN-C39ATKU1 = 5.2 mm
 - IN-C39BTKU1 = 4.6 mm
 - IN-C39CTKU1 = 3.6 mm



Scale 3:1

COMPATIBLE UV-C LEDs		
Manufacturer	Part Number	Layout
Inolux	IN-C39ATKU1	L
Inolux	IN-C39BTKU1	L
Inolux	IN-C39CTKU1	L
Seoul Viosys	CUD5GF1B	L
Seoul Viosys	CUD7GF1B	L
Seoul Viosys	CUD8GF1B	L
Luminus Devices	XBT-3535-UV-A130-CD275-01	K
Luminus Devices	XBT-3535-UV-A130-CC275-00	K
Luminus Devices	XBT-3535-UV-A130-CC280-01	K
Luminus Devices	XBT-3535-UV-A130-CD275-01	K
Luminus Devices	XBT-3535-UV-A130-CD275-00	K
Luminus Devices	XBT-3535-UV-A130-CD280-01	K
Luminus Devices	XST-3535-UV-A60-CD275-00	J
Luminus Devices	XST-3535-UV-A60-CD280-01	J
Luminus Devices	XST-3535-UV-A60-CD275-01	J
Luminus Devices	XST-3535-UV-A60-CE275-01	J
Luminus Devices	XST-3535-UV-A60-CE280-01	J
Luminus Devices	XST-3535-UV-A60-CE275-00	J



Solder Pad Locations (Note 6)				
Pad ID	X Loc	Y Loc	Size	Rotation*
P1	0.0	7.5	2.8 x 2.8	0°
P2	6.9	4.0	2.5 x 1.8	300°
P3	6.9	-4.0	2.5 x 1.8	240°
P4	0.0	-7.5	2.8 x 2.8	180°
P5	-6.9	-4.0	2.5 x 1.8	120°
P6	-6.9	4.0	2.5 x 1.8	60°

* Rotation angle around center point of pad.

SCALE	As noted	DRAWN	RW	May 7/20	SOLDER PASTE	AIM NC-258
UNITS	MM	CHECKED	WW	May 8/20	REFLOW PROFILE	Standard
TOLERANCE	As noted	ISSUED		May 19/20	QTY PER PANEL	8



QTY	DESCRIPTION
1	UV-01 Polytronics TCB-8 MCPCB
1 - 3	UV-C LEDs
1 - 3	Vishay CRCW0805000020EA OR Resistor
2	ERNI 474340 IDC Terminal (optional)

Luxeon Star LEDs
service@luxeonstar.com / www.luxeonstar.com

PROJECT
UV-01 SABER²
UV-C Star LED Module

Quadica® Developments Inc.

PART: UV-01-XX REV: A